

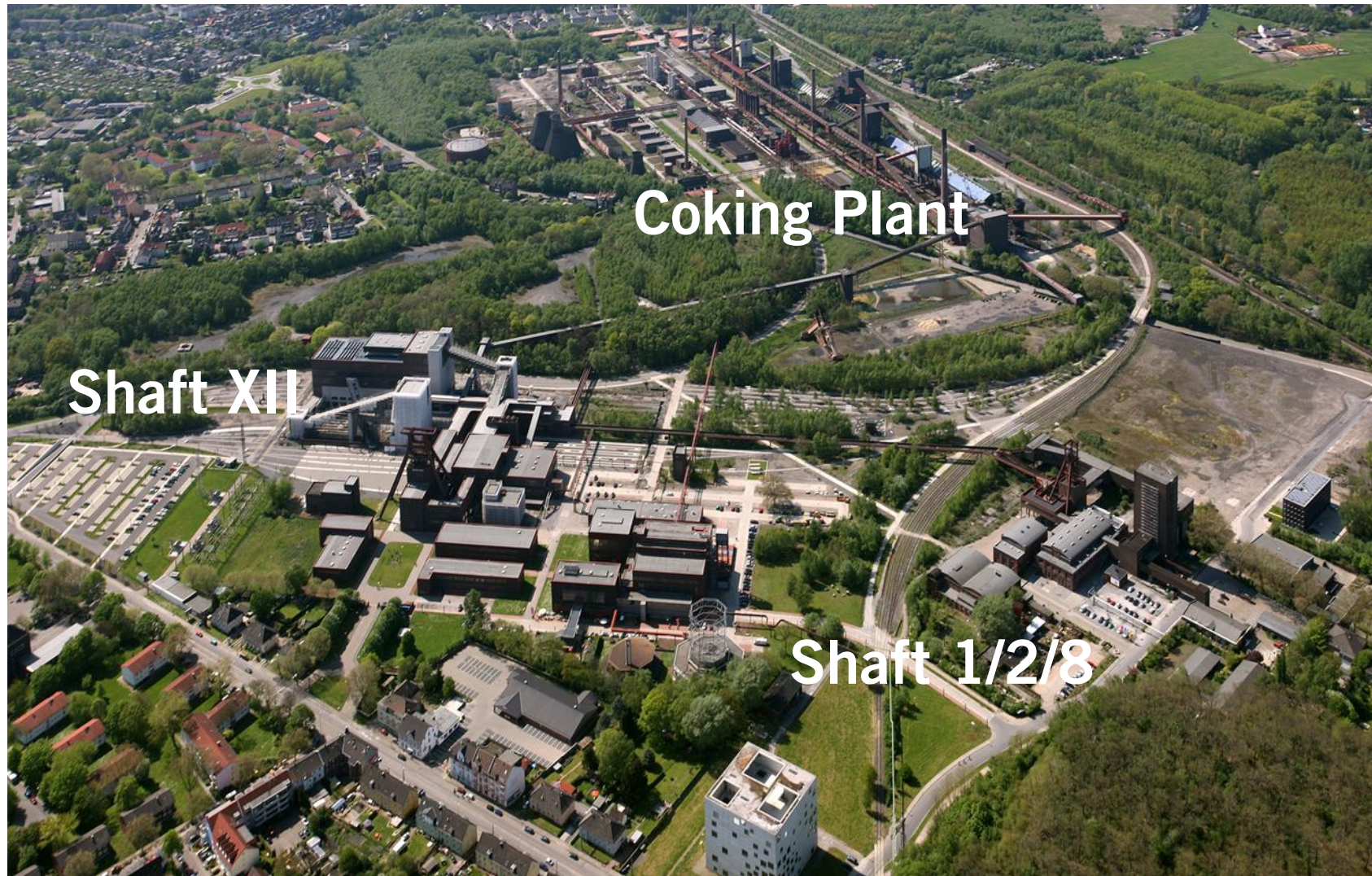
# Industries of the past building Industries of the future: The example of UNESCO World Heritage Site Zollverein





# Zollverein: landmark of the Ruhr Area

Folie / 2



# Facts and figures

- Shaft XII, Shaft 1/2/8 and the Coking Plant
- a total area of 100 ha (the size of 100 large football fields)
- larger than Essen's city centre (94 ha)
- 65 buildings, more than 200 technical plants and machines
- approx. 2.7 km of conveyor bridges and over 13.2 km of pipes
- one of the largest industrial monuments in Europe and all over the world



# Zollverein yesterday

Folie / 4



# Zollverein yesterday

- The mine was in operation from 1851 to 1986
- The Shaft XII had a depth of approximately 1,000 meters
- 240 million tons of coal were produced between 1851 and 1986
- Up to 8,000 miners worked in shifts above and below ground
- Zollverein was regarded as the largest and most efficient coal mine in Europe
- Essen was the largest mining city on the European Continent

# Zollverein yesterday

Folie / 6

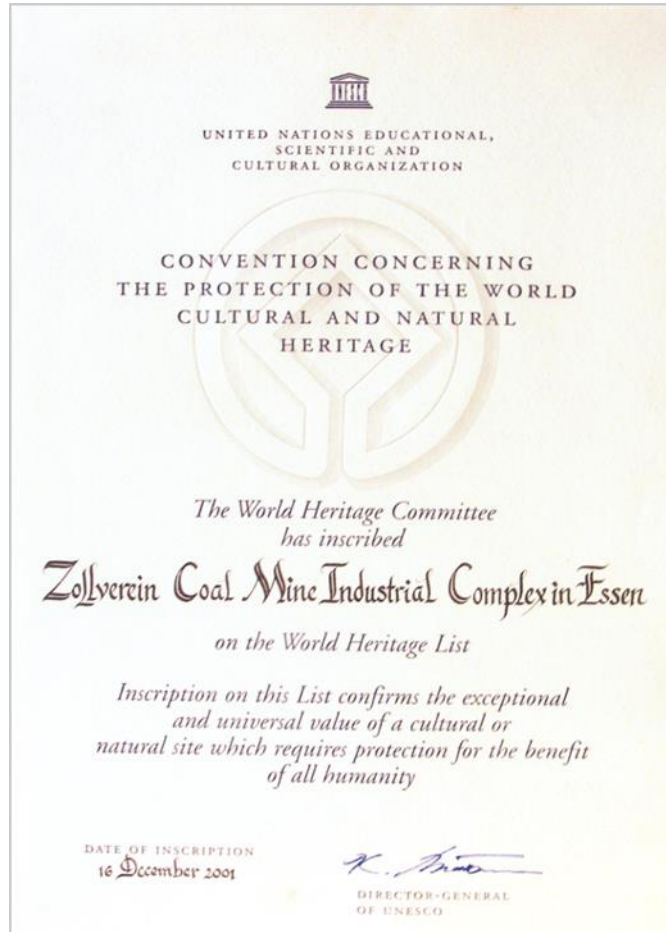


# The Change: closing and refurbishment

- The Zollverein Coal Mine was closed down in 1986 as the last of 291 collieries in Essen
- On 16 December 1986 the ensemble was put under a preservation order
- In 1989, the first refurbishment phase started at Shaft XII
- The Zollverein Coking Plant was closed in 1993
- In 1997, the Design Zentrum Nordrhein Westfalen moved into the former Boiler House
- 1998: establishment of the Zollverein Foundation



# The Change





# The Change: UNESCO World Heritage

- In 2001 the Zollverein Coal Mine and Coking Plant was officially included on the UNESCO World Heritage List
- In 2002, architect Rem Koolhaas and his Office for Metropolitan Architecture developed a master plan for the restructuring of the location into an active culture and business centre
- 2006: Membership of the „European Route of Industrial Heritage” (ERIH)

# The change: European Capital of Culture 2010

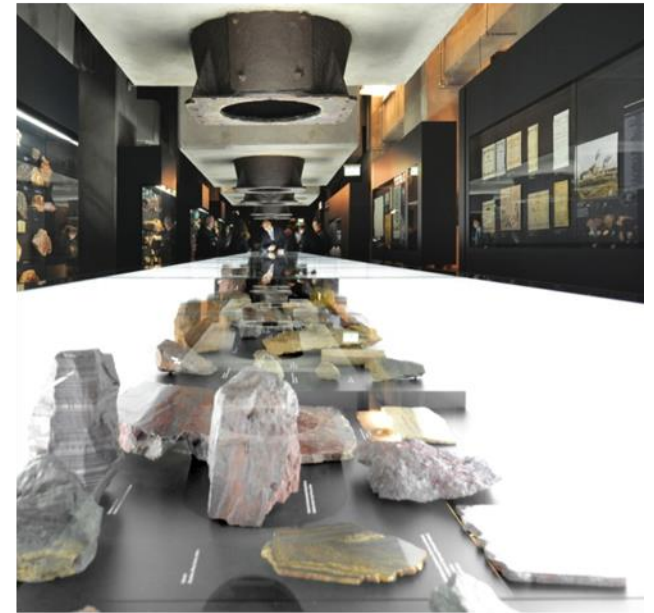


# The change: European Capital of Culture 2010

- 2010 the Capital of Culture Year RUHR.2010 was celebrated in the Ruhr Area
- Zollverein as the central gate for visitors and the location for the opening party
- In 2010 the Zollverein World Heritage Site enjoyed a record attendance of 2.2 million visitors
- The Ruhr Museum (250.000 visitors a year) and the Visitor Centre in the converted Coal Washery basically completed the development of Shaft XII as a tourist center



# The change: opening of the Ruhr Museum



# Zollverein today: RUHR.VISITORCENTER & Portal of Industrial Heritage





# Zollverein today: a place for discoveries





# Zollverein today: the Monument Path for interpretation and education

- Denkmalpfad ZOLLVEREIN®/Monument Path ZOLLVEREIN®  
as central tourist attraction
- 155.000 visitors in 2015
- 110 trained guides
- eight languages
- 30 different tour formats

# Zollverein today: a place to visit

Folie / 16



# Zollverein today: a place to visit

- about 1.5 million visitors per year
- most-visited tourist destination in the Ruhr Area
- second (after the Cologne Cathedral) as cultural tourist attraction in North Rhine-Westphalia
- central anchor point of the „Route of Industrial Heritage” and the „European Route of Industrial Heritage” (ERIH)



# Zollverein today: a place for culture



# Zollverein today: a place for architecture & design





# Zollverein 2020!





# Zollverein 2020!

- new building for the Design Faculty of Folkwang University of the arts (summer 2017)
- new hotel in 2017/2018
- new building complex for the RAG AG Headquarters
- ... to be continued

