

Making It Fun – The Story of ‘The Melting Shop’

John Hamshere
Chief Executive
Sheffield Industrial Museums Trust

Making It Fun – The Story of ‘The Melting Shop’

Kelham Island Museum

- Home of early Sheffield industry



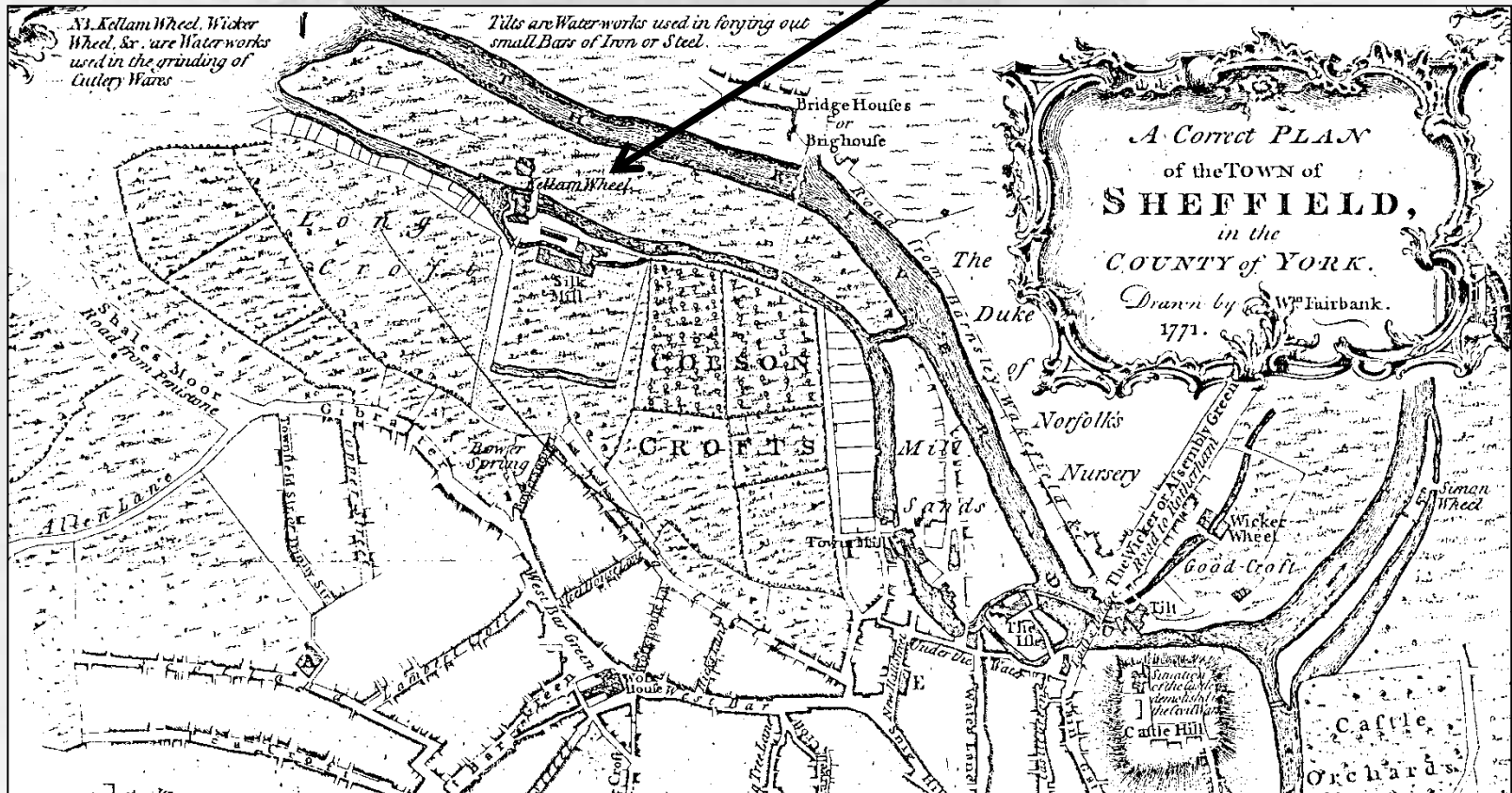
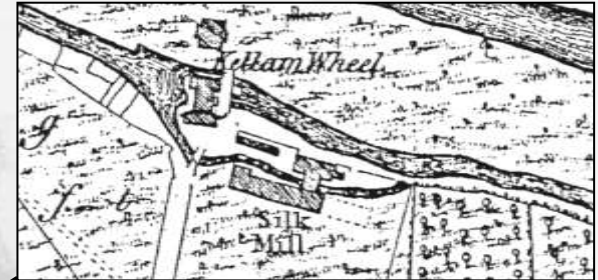
KELHAM ISLAND - 1737



Making It Fun – The Story of ‘The Melting Shop’

Kelham Island - 1771

N.B. Kellam Wheel, Wicker Wheel, &c. are Waterworks used in the grinding of Cutlery Wares



Making It Fun – The Story of ‘The Melting Shop’

Kelham Island Museum

- Site of metal working
- 1829 - John Crowley's Iron Works occupy the island



JOHN CROWLEY & CO.,
KELHAM IRON WORKS, SHEFFIELD
MAKERS OF PATENT CARBURETTED
MALLEABLE IRON CASTINGS,
IN LIEU OF FORGED WORK.

ADVANTAGES:—
GREAT STRENGTH, COMBINED WITH UNIFORMITY OF QUALITY.

SOLE MAKERS OF THE
SAFETY LEVER CHAFF CUTTERS
(SAMUEL EDWARDS' PATENT).

THE JURORS OF THE
PARIS
UNIVERSAL EXHIBITION
HAVE AWARDED THE ONLY
GOLD MEDAL
To these Patent Chaff Cutters,
IN COMPETITION WITH
ALL THE WORLD.

"INVINCIBLE" LAWN MOWERS,
(SAMUEL EDWARDS' PATENT).
AWARDED
THE ONLY GOLD MEDAL
EVER OFFERED IN ENGLAND
FOR OPEN COMPETITION.
BIRMINGHAM, 1874.

LAWN MOWER
CONTEST.

The most crucial trial
of Lawn Mowers ever known
in this country, was at the
National Lawn Mower Con-
test in Birmingham, July
28th, 1874, when the Premier
Gold Medal was awarded to
Samuel Edwards' "Invinc-
ible." The result proves
conclusively that it is with-
out exception the best Lawn
Mower made.

Prices on application to JOHN CROWLEY & Co., SHEFFIELD.

14

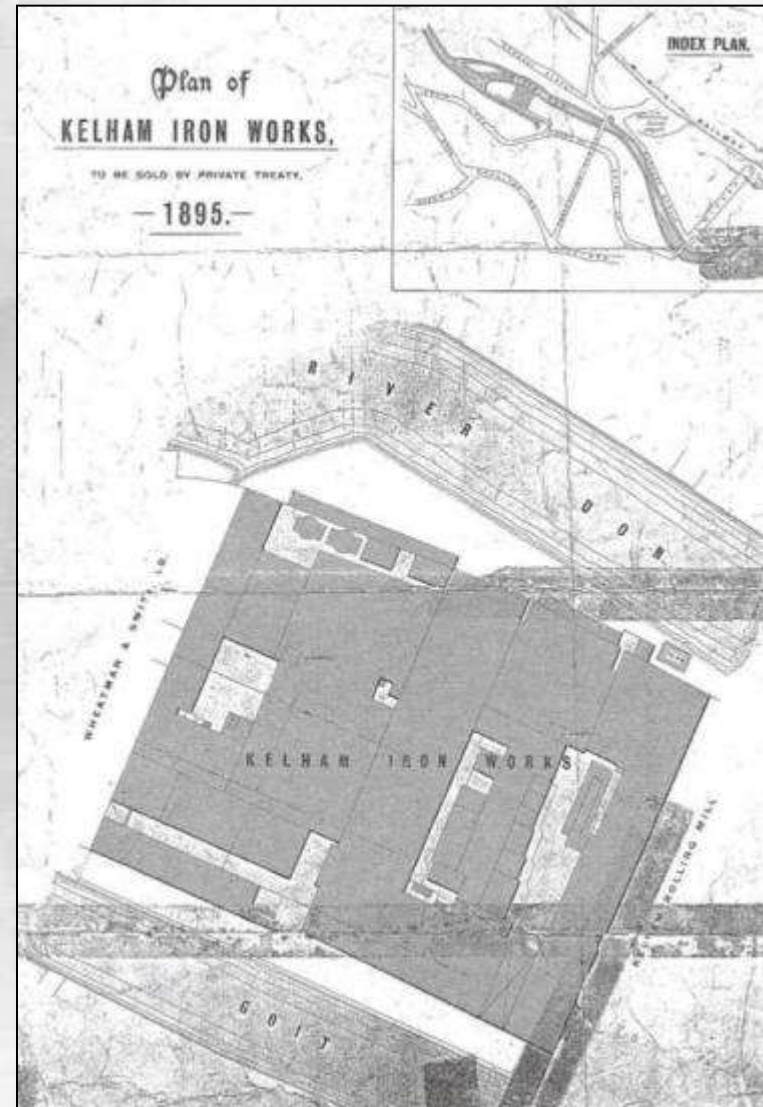
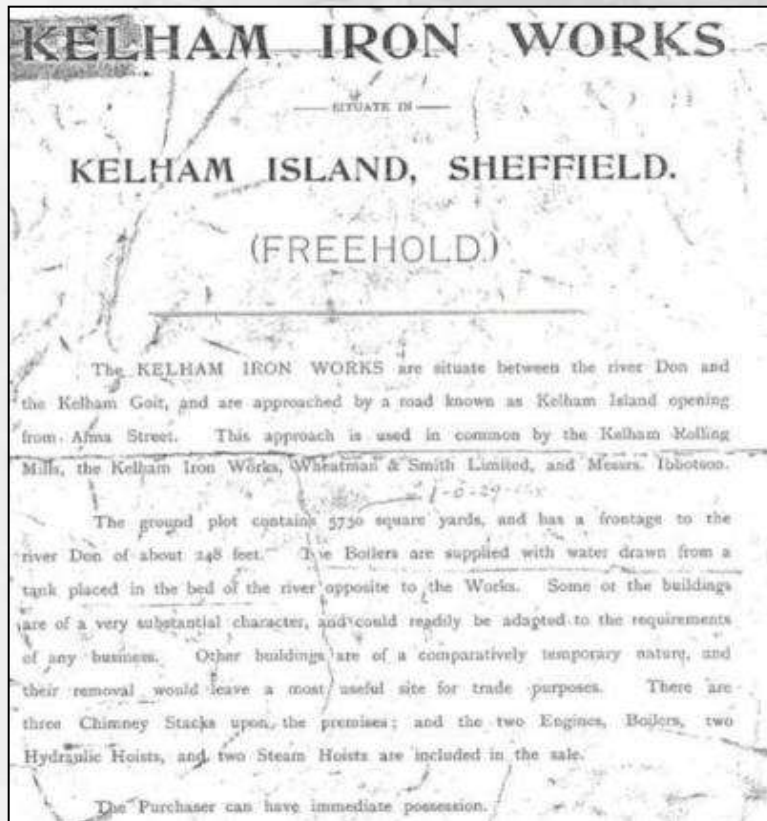
Advertisement 1879



Making It Fun – The Story of ‘The Melting Shop’

Kelham Island Museum

- The end of the Iron Works
- Steel making continued into the 20th century



Making It Fun – The Story of ‘The Melting Shop’

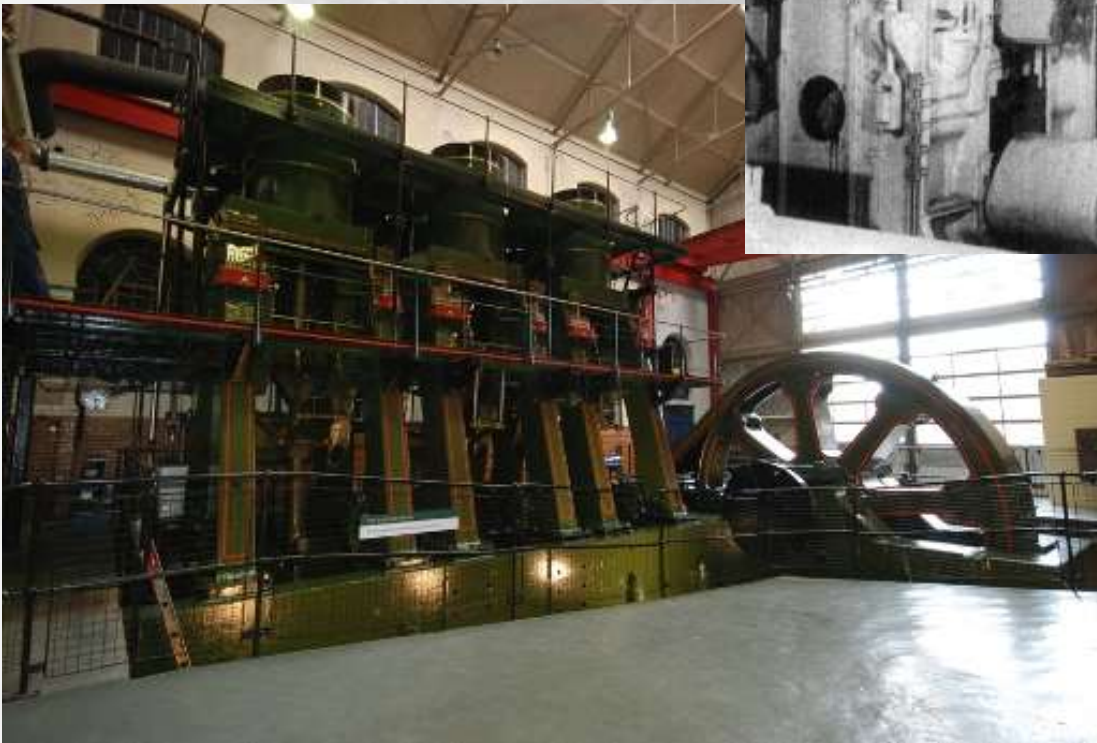
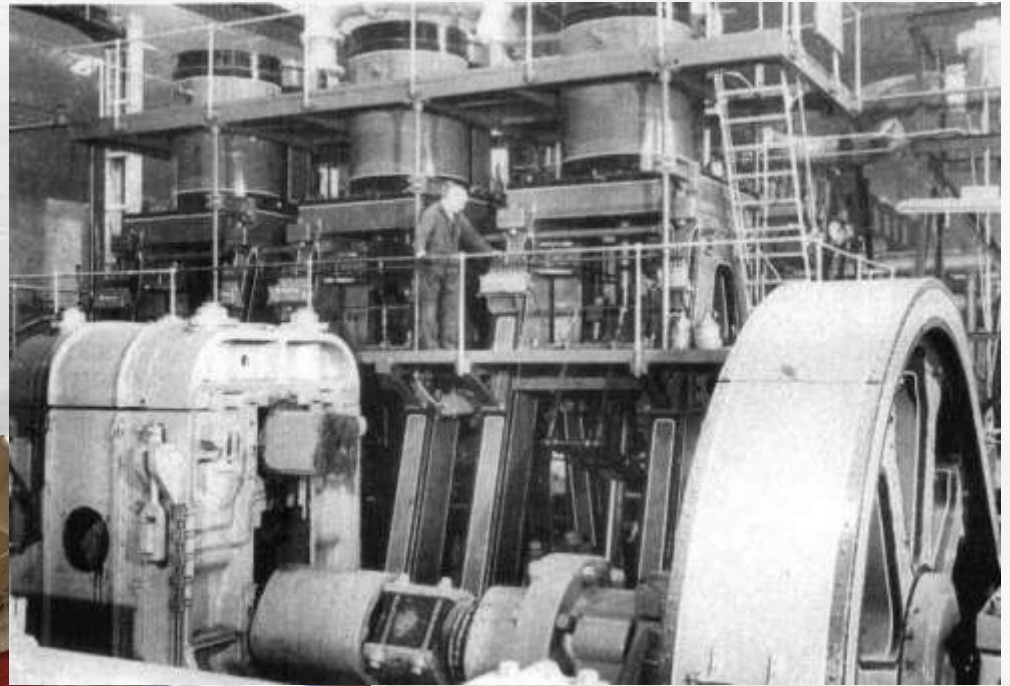
Kelham Island – Power Station built 1897



Making It Fun – The Story of ‘The Melting Shop’

Kelham Island Museum

- Saving the River Don Engine
- Museum opens 1982



Making It Fun – The Story of ‘The Melting Shop’

Kelham Island Museum

- Saving the River Don Engine – AGAIN
- 1990s public sector cuts
- Kelham funding cut by two thirds
- No curators and half an education post
- Danger of ‘mothballing’
- RDE would never run again
- Sheffield Hallam University drive creation of new charitable trust to save Kelham
- Kelham Island Museum Ltd created 1994



Making It Fun – The Story of ‘The Melting Shop’

Kelham Island Museum

- No money
 - Falling visitor numbers
 - Lack of renewal over previous decade
 - Few staff
 - What do we do?
- ⇒ A new vision for the site

THE KELHAM CONCEPT

- The Aim 1981

*“The aim is not just that the museum should be a place where people come to admire and marvel at the achievements of the **past** but that the museum should also be alive, showing what is being achieved **today**, and having a relevance to the **future**”.*

Sheffield Industrial Museum Trust Prospectus c1981

- The Aim 1995

To create a **sustainable**, living and working Museum that will be a major leisure destination, represent pride in **past** achievement, be a **showcase** for Sheffield industry and innovation, and an **inspiration** for future generations to continue the tradition of technological advance, fostering industrial change and enterprise by:

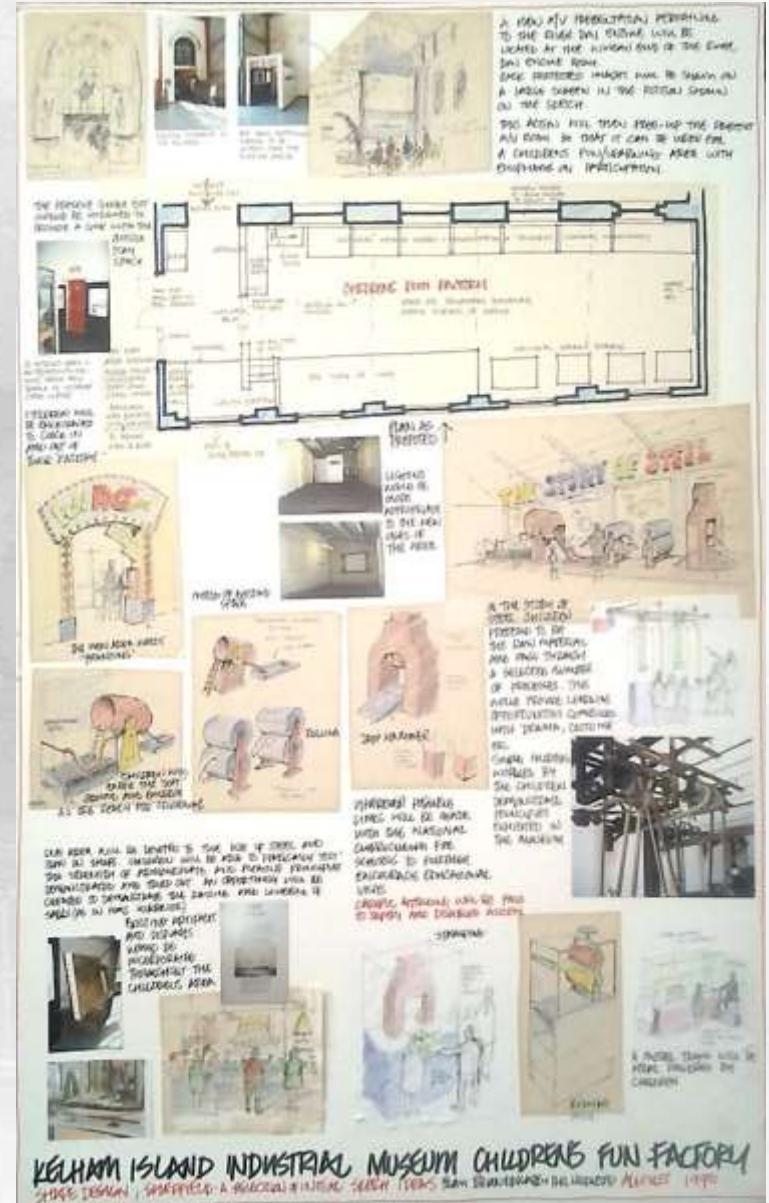
Making It Fun – The Story of ‘The Melting Shop’

The Rescue & Survival Strategy:

- The Kelham Concept - Why are we here? ⇒ ***Achievements of the past, Showcase for the present***
- Clear Aim or Mission - What are we here to do? ⇒ ***Inspiration for future generations***
- Clear Objectives - How are we going to do it?

⇒ Create ***Change***

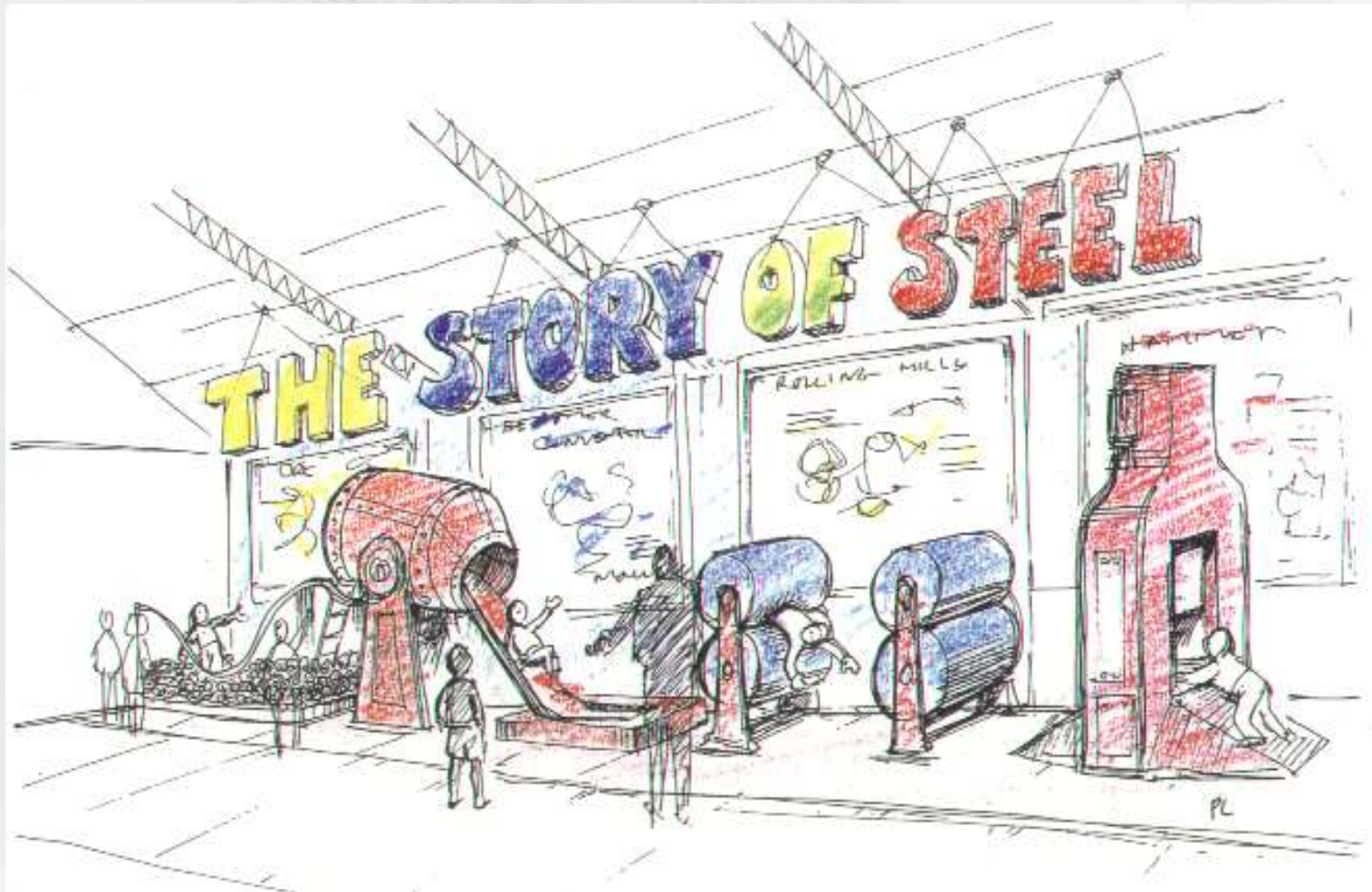
- ***Immediate Change***
- ***Ongoing Change***
- ***Permanent Change***
- ***The Big Project***



Making It Fun – The Story of ‘The Melting Shop’

The Drawing that Saved Kelham Island Museum?

“Children are melted, converted, poured, rolled and hammered.....”



Making It Fun – The Story of ‘The Melting Shop’

Building the Melting Shop 1996

- The Bessemer Converter



Making It Fun – The Story of ‘The Melting Shop’

Building the Melting Shop 1996

- The Bessemer Converter – riveting!



Making It Fun – The Story of ‘The Melting Shop’

Building the Melting Shop 1996

- The Bessemer Converter



Making It Fun – The Story of ‘The Melting Shop’

Building the Melting Shop

- The Bessemer Converter



Making It Fun – The Story of ‘The Melting Shop’

Building the Melting Shop

- The Steam Hammer



Making It Fun – The Story of ‘The Melting Shop’

Building the Melting Shop

- The ‘Girders’ providing a unting framework for the ‘experience’



Making It Fun – The Story of ‘The Melting Shop’

Melted!



Making It Fun – The Story of ‘The Melting Shop’

Converted!



Making It Fun – The Story of ‘The Melting Shop’

Poured!



Making It Fun – The Story of ‘The Melting Shop’

Rolled!



Making It Fun – The Story of ‘The Melting Shop’

Hammered!



Making It Fun – The Story of ‘The Melting Shop’

The New Melting Shop

- The Board loved it
- The local press loved it
- The politicians loved it
- But most of all the children loved it

Magic Island




Preaching to the young converted: Minister for Sheffield Ann Widdecombe pictured at the Keelham Island exhibition. The Story of Steel with Museum Director Mr John Hamshere and local schoolkids

BY JENNY POLLOCK

BACK to the future, that's where Kelham Island Industrial Museum is going.

The Energy Centre, the first of three new attractions

Children find grappling with history is such fun

 A new children's gallery at local museum that gives kids a chance to show their metal.

Fun at the melting shop

By Jenny Pollock

MAKING steel is about to take on a whole new meaning for Sheffield's youngsters thanks to new play equipment opening in Kibbles Island.

The Kidzies Shop, which opens to children tomorrow, brings an alternative approach to learning about the city's traditional industry.

The "bottle" changes its look as it grows over a growing stem, and then the "bottle" shrinks to a giant, spongey, hollow being. It is called by a special name.

The seedling itself also has a giant, bottle-like form. The children quickly learn to put together a "tree" by a working model of a flowering cresswort which all the 1000 Birds of the Country, and all the insects present, fly, crawl and creep in. It is made in a very few minutes.

Every children will have their own share of it, and the whole work.

The Midway Day will be more as a form

as well as the Morning Glory, Red water lilies, and water hyacinths. In the Victoria water lilies which indicate evening, from the sunfish and bluegill, from the young children played with and sharing with the sun fish in Victoria pond. (Check for wild sun, above, below, and below)

Changes

The two new exhibitions are the focus of a series of workshops which have a central focus of activities that will focus on a 1990 performance project, consisting of improvisation with Paul Harris University, and teachers and the city center. The project will be:

- The Museum's education director, John Martinez, and the Museum's National Center, which will provide the
- National Center, which will provide the
- National Center, which will provide the

Two more people in the same family are thought to have died from the disease. After the death of his mother, the wife, mother, Florida, Florida.

What has been added so far at Northern Ireland...

IN 1822, it took over 100
years ago. But now
with modern machinery
and modern
technology.

■ **Self-organizing network:** Following the discovery of a new peer, the network automatically reconfigures itself.

- First approximation by individual gene-environment fit
- (Optimal) is rare

■ Dancer posing up
entirely

- I am not sure this is a very strong thing
- My friend is not a very strong thing

■ **Formed free upper**
 Since 1970, the **WALL** has
 been in:

Kelham Island's new activity for children

The interesting attraction at Nohara Island Museum gives visitors the chance to take the path of a shark from its early life stages to adulthood. The children start off as a baby shark, being nurtured into being a shark and finally a shark.



Me Pans
Children go to school and are
in grade three.
They are very
tall, yellow and
orange. They are
very strong and
they can fly.

2. Convert

3 Positive
"I really love the
"swirled" out-
to-whisker
going down."
The more we
taste the [ice
cream], the more
I like it. I like it
the best and
want to eat it."

6. Clavicle
The clavicle is the only bone in the body that is located in the neck. It is a long, thin bone that connects the sternum to the scapula. It is the only bone in the body that is located in the neck.

6. To take
 - This helps
 - from making
 - something
 - large with
 - others and
 - the other is
 - The only
 - made in
 - a small town

6 Forget
Drive for an
hour in
any
direction
from
your
home
and
you
will
find
a
place
where
you
can
forget
your
problems
for
a
moment.

Making It Fun – The Story of ‘The Melting Shop’

The Sheffield Star’s version of The Melting Shop

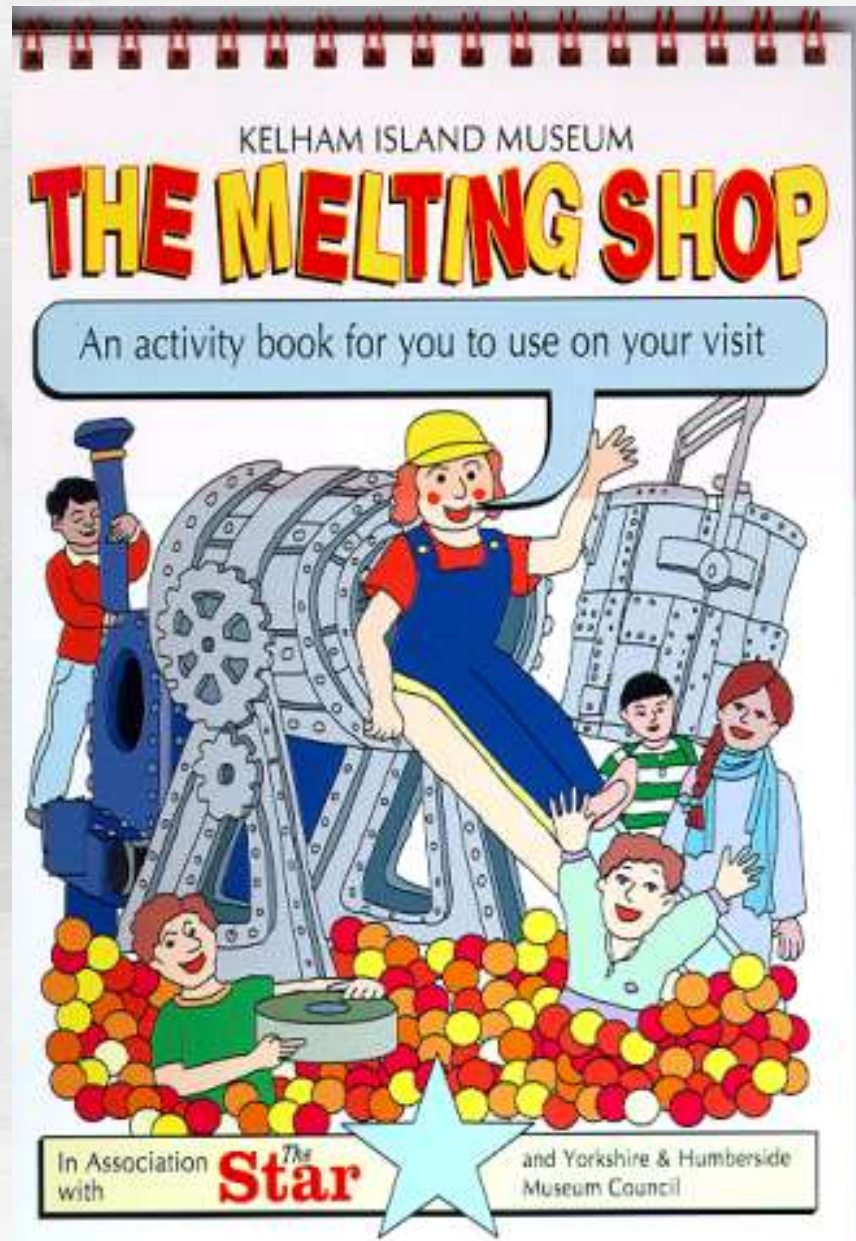
Kelham Island's new activity for children

The latest attraction at Kelham Island Museum gives children the chance to take the path that steel takes on its way through a factory. The children start off as iron being melted and end up as steel being hammered into shape as a finished product!



Making It Fun – The Story of ‘The Melting Shop’

The Sheffield Star also sponsored the booklet for The Melting Shop



Making It Fun – The Story of ‘The Melting Shop’

Not just the Story of Steel

- Sheffield built cars
- Sheffield Simplex 1922



Making It Fun – The Story of ‘The Melting Shop’

Not just the Story of Steel

- Locomotive to take to pieces



Making It Fun – The Story of ‘The Melting Shop’

The Result

- Kelham Island Museum saved
- Visitor Numbers up by 50% (1995-1998)
- Earned Income up by 80% (1995-1998)
- Kelham Island Museum Ltd approached to take on sites closed by the Council in 1997 due to more cuts
- Sheffield Industrial Museums Trust formed to include Abbeydale Industrial Hamlet and later Shepherd Wheel
- Both Water-powered sites



Making It Fun – The Story of ‘The Melting Shop’

Water Power

- Making, using and playing



Making It Fun – The Story of ‘The Melting Shop’

Hands On

- Making, using and playing



Making It Fun – The Story of ‘The Melting Shop’

Then the Great Flood of 2007



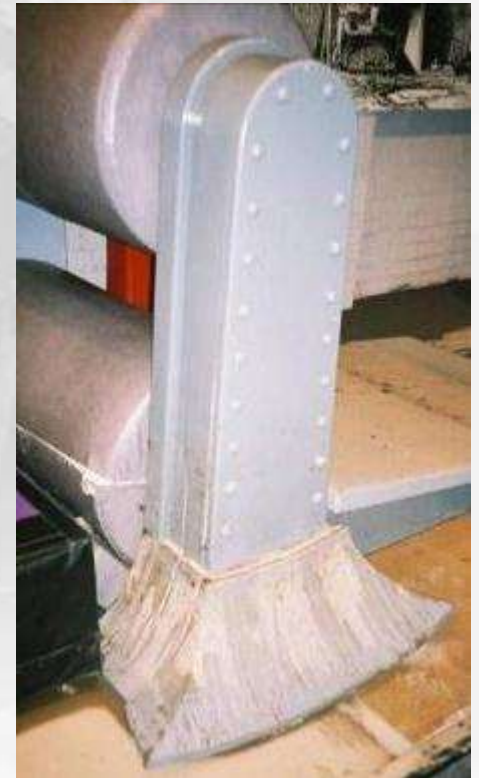
Making It Fun – The Story of ‘The Melting Shop’

Then the Great Flood of 2007

- Melting Shop destroyed



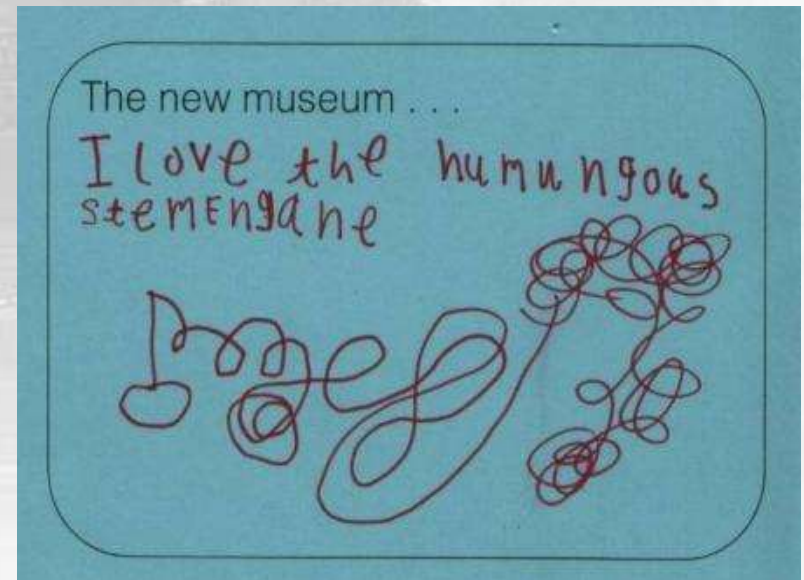
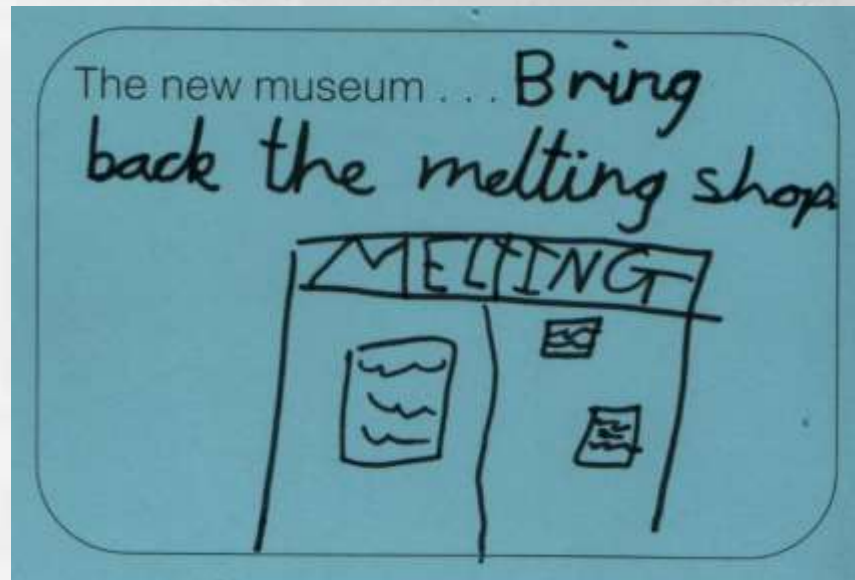
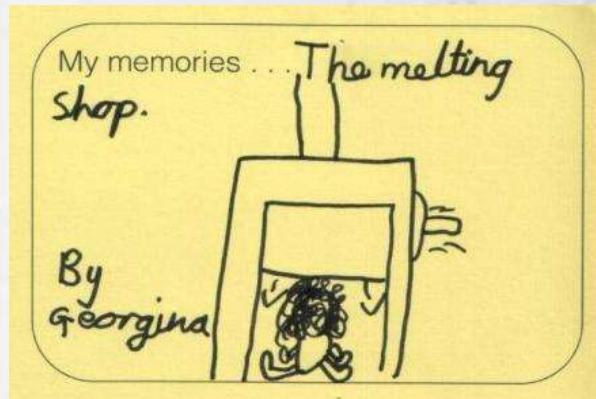
Belfors Manager.....“No John...its all got to go... ..Tomorrow it will swell, the day after it will be covered in mould and the day after that it will fall to bits.....”



Making It Fun – The Story of ‘The Melting Shop’

The Melting Shop –After the Flood

- Doing it all AGAIN!



Making It Fun – The Story of ‘The Melting Shop’

The Melting Shop –After the Flood

- Doing it all AGAIN!



Making It Fun – The Story of ‘The Melting Shop’

The Melting Shop –After the Flood

- Doing it all AGAIN!



Making It Fun – The Story of ‘The Melting Shop’

The Melting Shop –After the Flood

- Doing it all AGAIN!



Making It Fun – The Story of ‘The Melting Shop’

The Melting Shop –After the Flood

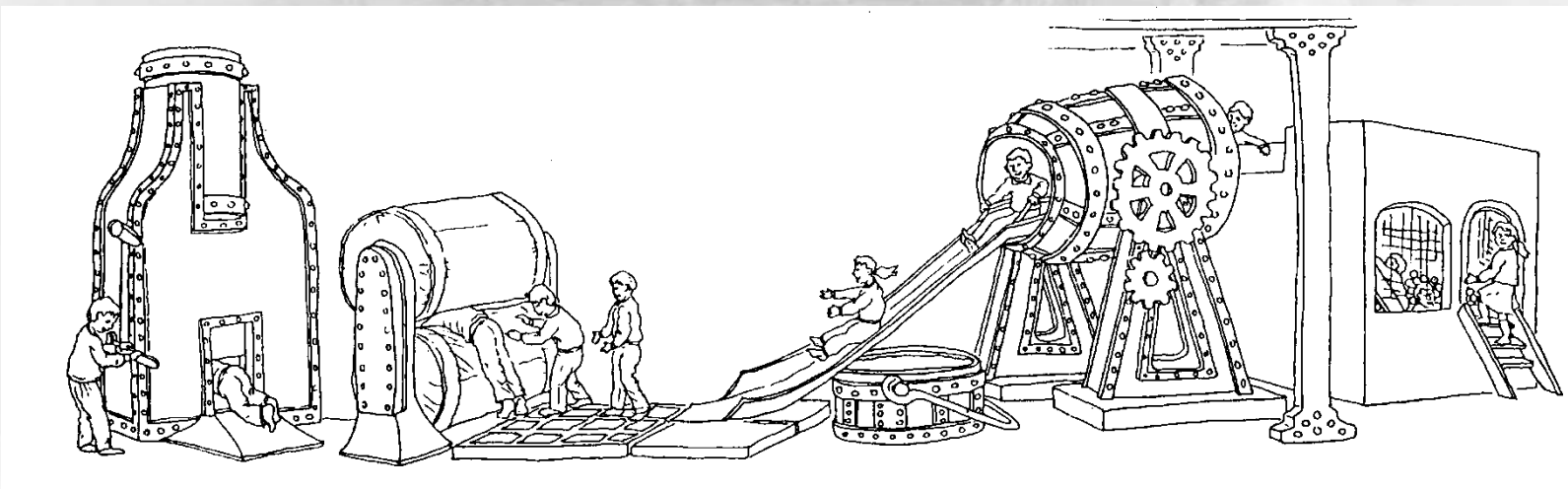
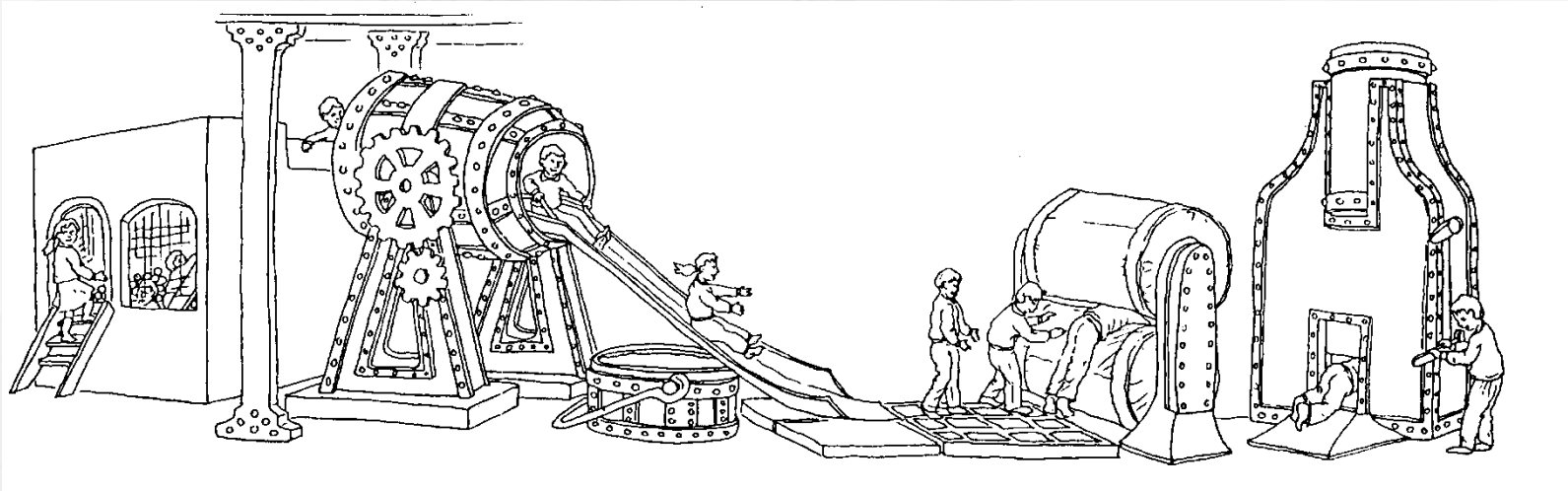
- Doing it all AGAIN!



Making It Fun – The Story of ‘The Melting Shop’

The Melting Shop –After the Flood

- Doing it all AGAIN - but in reverse



Making It Fun – The Story of ‘The Melting Shop’

The Melting Shop –
After the Flood

- **DONE!**

